

# **INCLINED PLANE**

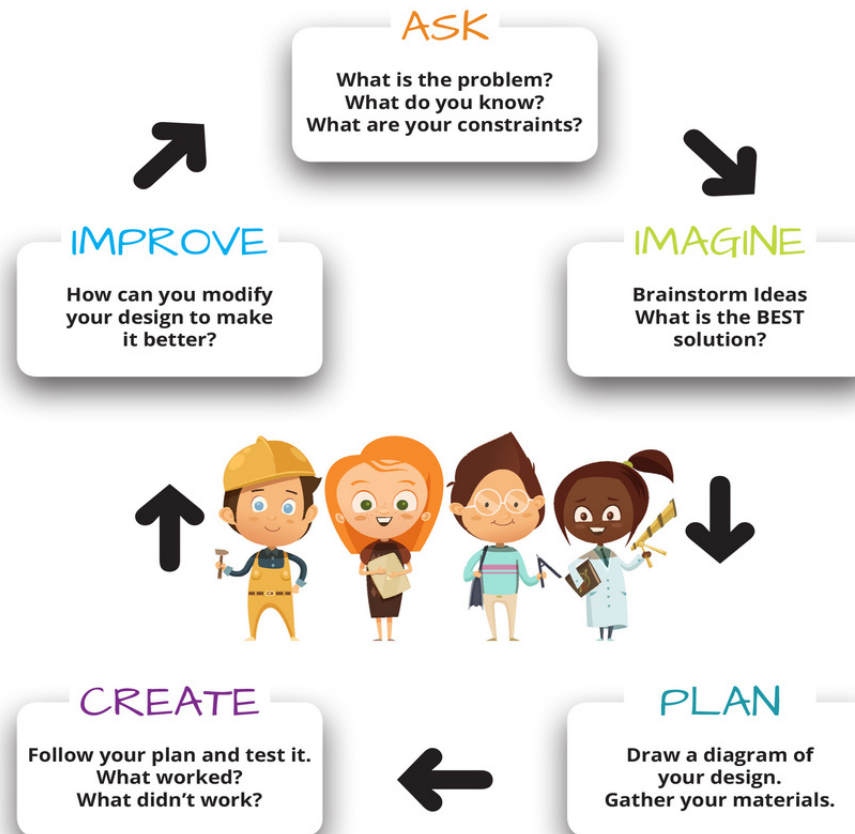
## Introduction to the CHALLENGE (10 mins)

**Design a Zip line that can carry a weight of 1 kg-3 kg from the window to the door**

Use the engineering design prompt to come up with an invention of your own

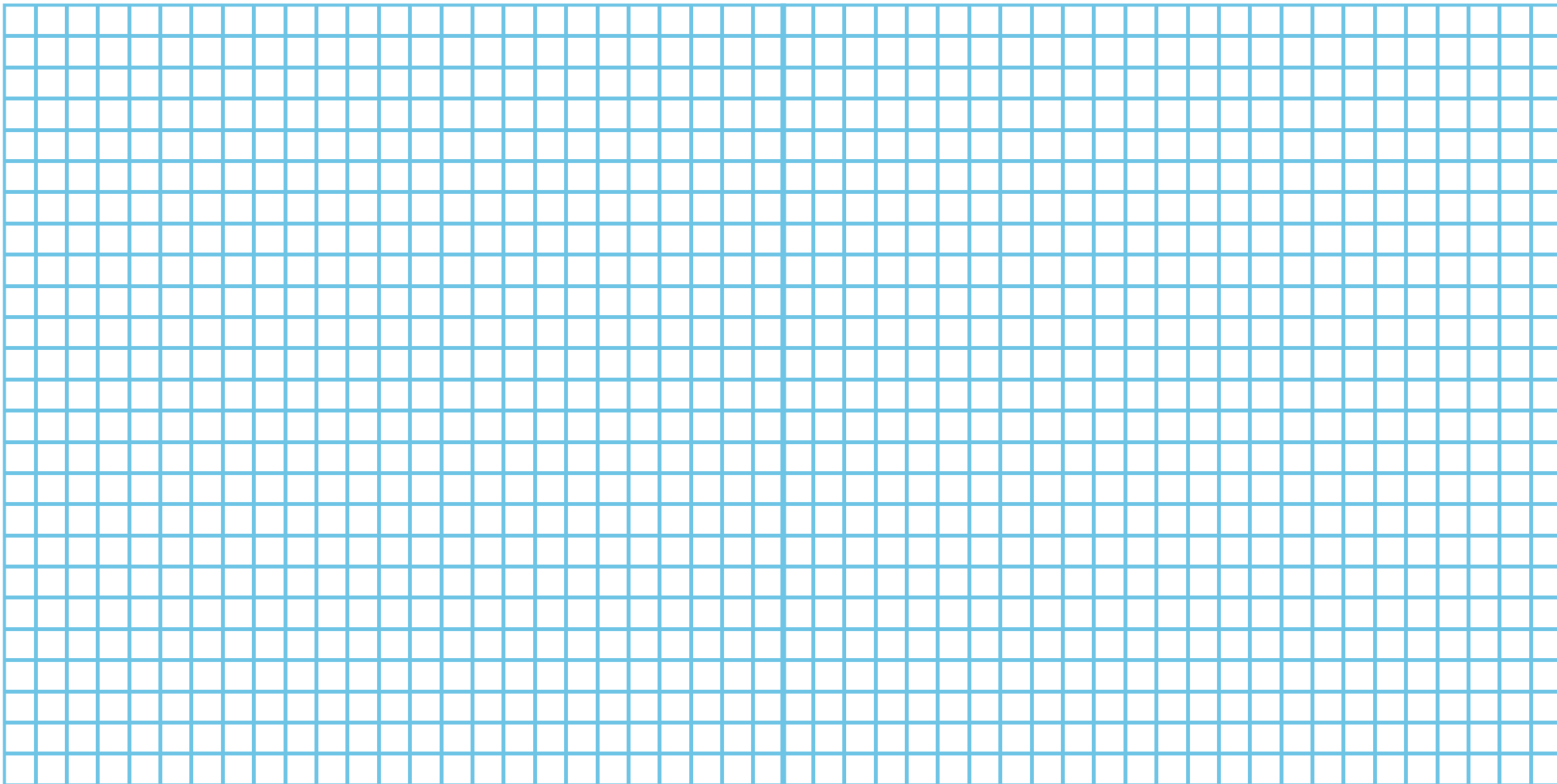


# Engineering Design Process



# Brainstorm and design (10 mins)

What kind of simple machine can be used to carry a weight of 1kg-3kg from the window of a room to the door? Sketch below your idea.



Build, test, evaluate and redesign (30 mins)

Discuss what happened (5 MINS)

**Challenge extension:** Build a paper cup cable car that can bring people down (Lego toys/figurines) from a mountain or stairs to the floor. Sketch below your design idea.

